

An aerial, high-angle photograph of a busy city street. The street is filled with various vehicles, including cars, vans, and a large white bus. The scene is captured in a slightly desaturated, dark tone, emphasizing the density of traffic. The text is overlaid on the left side of the image.

wialon | by Gurtam

# Streamline your fleet operations with **Wialon**

Ultimate solution for fleet digitalization  
trusted by thousands of companies worldwide

# In just **7 minutes** discover:

- What Wialon is and why it's a trusted solution;
- How Wialon can transform your business;
- The essential tools Wialon offers for fleet management;
- The real-world use cases in various industries;
- How to seamlessly integrate Wialon into your business.

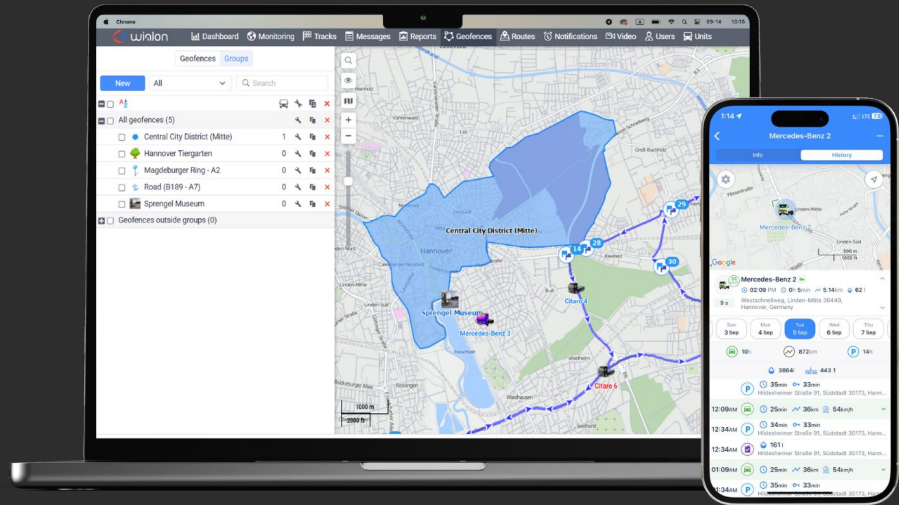


# Need to manage your fleet?

## Meet **Wialon**

Wialon is a **platform for fleet digitalization**, designed to streamline operations and enhance efficiency for various fleets — from cars and trucks to heavy vehicles and machinery.

With Wialon, you get a clear view of your fleet's every move, putting you in control to **confidently manage your business with data-driven insights** that help boost profits and reduce costs.



# Wialon by the numbers

**22**

years on  
the market

**160+**

countries where  
Wialon partners  
operate

**400,000+**

companies  
manage their fleets  
with Wialon

**4+ million**

connected  
vehicles

# Key facts about Wialon

Available in the cloud  
or on your servers

Offers **99.5%**  
**uptime guarantee**

Supports **over 3,600 tracking devices**  
from 700+ hardware manufacturers

Securely stores data in top-tier data  
centers located in the US and Europe

Seamlessly integrates with enterprise  
software (e.g. CRM, ERP, and BI systems)

Created by **Gurtam**, a company certified  
for **international security and quality  
standards**: ISO/IEC 27001 & ISO 9001

# What Wialon can do for your company

Wialon's flexibility makes it the go-to choice for diverse business tasks, including:

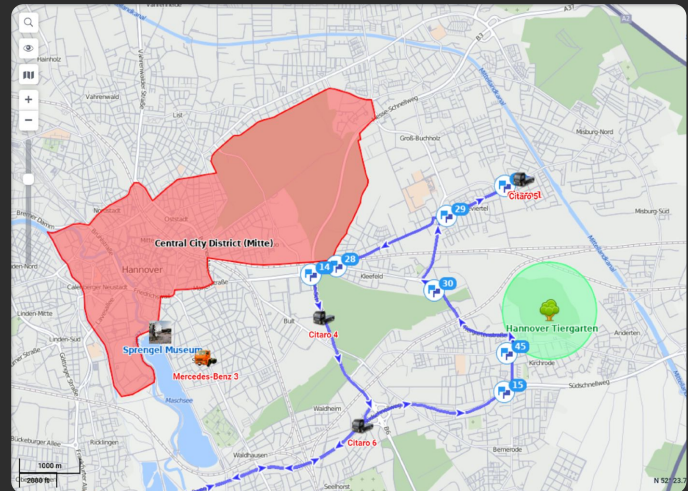
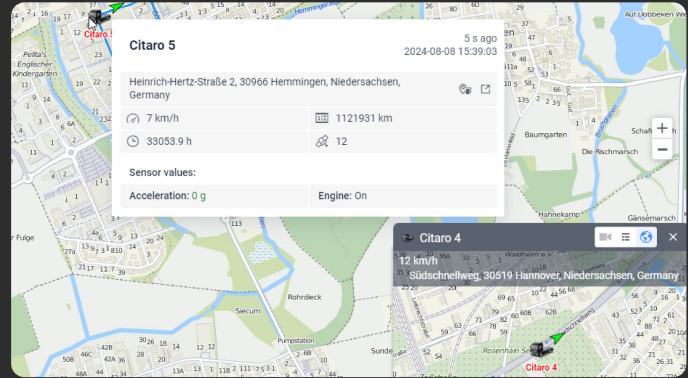
- **Going paperless** and streamlining routine fleet management processes
- **Automating operational flow** for increased efficiency
- **Reducing downtime** and extending the lifespan of vehicles and machinery
- **Eliminating fuel drains** and misuse
- **Safeguarding vehicles and cargo** against theft
- **Ensuring driver compliance** with road regulations

Ultimately, with Wialon, you **save both time and money**

# Inside Wialon: Your fleet, mapped out

**Online tracking** allows you to know where your vehicles are, helping to control late or early arrivals and detect any deviations from planned routes.

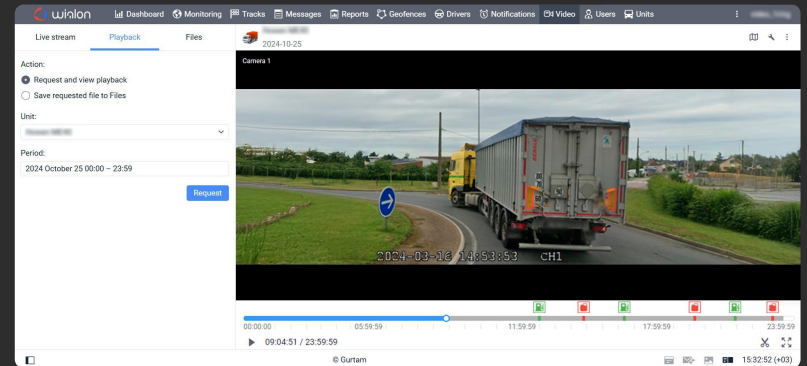
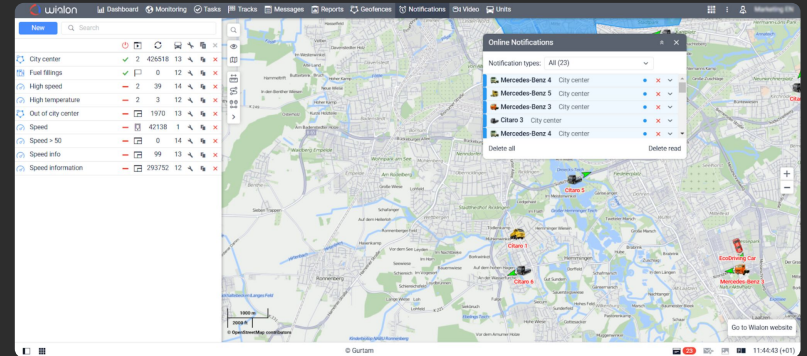
**Geofencing** shows you if vehicles enter or exit specific areas. This feature helps prevent unauthorized access, ensure compliance, and promote safe driving.



# Inside Wialon: Stay informed, at all times

**Notifications and alerts** keep you informed about critical incidents such as speeding, sudden stops, and alarm activation, helping you respond quickly and prevent costly incidents.

**Video telematics** enables you to watch live streams or recorded videos, ensuring unbiased incident analysis, improving road safety, and simplifying insurance claims.





# Inside Wialon: Maximize efficiency, minimize costs

**Fuel management** reduces costs by tracking fuel usage and preventing fuel theft.

**Route optimization** utilizes algorithms to find the most efficient routes, based on vehicle type, cargo, fuel use, and traffic.

**Driver behavior monitoring** allows you to identify and address unsafe and risky driving habits.

The screenshot displays the Wialon interface for route optimization. On the left, a sidebar shows 'Route name: New route' and 'Check points' including 'Amsterdam: Vondelpark (Picutre + Text)', 'Bank', 'Bar', and 'Blue Zone'. Below this, it shows 'Distance before optimization: 352.69 km' and 'Distance after optimization: 407.40 km'. A 'Routing' window is open, showing 'Route options: 310.5 km - 2 h 46 min' and 'Route creation results' for two locations: 'Germany, Hildesheim, Niedersachsen' and 'Germany, Münster, Bayern'. A map on the right shows a blue route between these locations. At the bottom, a timeline shows a delivery point at 10:55 labeled '4 Delivery 3'.

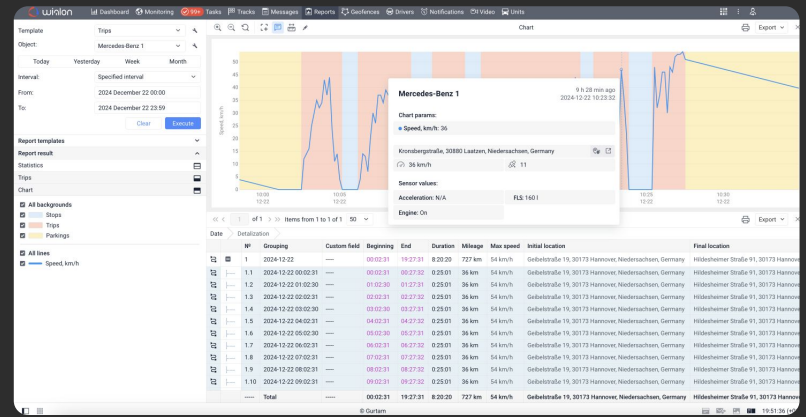
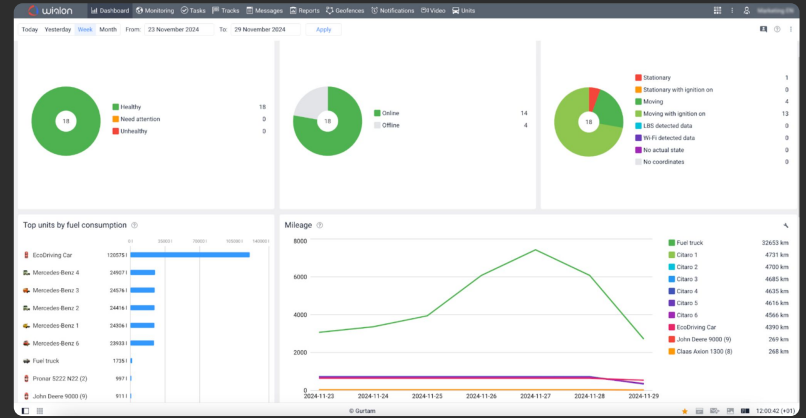
The screenshot displays the Wialon interface for driver behavior monitoring. The top left shows 'Eco driving report new' for an 'EcoDriving Car'. Below, there are filters for 'Today', 'Yesterday', 'Week', and 'Month'. A map shows a location in Hildesheim, Germany. Below the map, a table lists driving events:

Grouping	Violation	Beginning	Initial location	End	Final location
EcoDriving Car	Brake: extreme	2024-11-25 02:14:47	Westtangente, 31275 Lehrte, Niedersachsen, Germany	2024-11-25 02:14:49	Westtangente, 31275 Lehrte, Niedersachsen, Germany
EcoDriving Car	Speeding: mid	2024-11-25 02:15:03	Westtangente, 31275 Lehrte, Niedersachsen, Germany	2024-11-25 02:15:07	Westtangente, 31275 Lehrte, Niedersachsen, Germany
EcoDriving Car	Speeding: medium	2024-11-25 02:46:08	A 2, 28112 Schwelpe, Niedersachsen, Germany	2024-11-25 02:46:39	A 2, 28118 Bissig
EcoDriving Car	Speeding: mid	2024-11-25 03:23:02	A 2, 14790 Ziesse, Brandenburg, Germany	2024-11-25 03:26:32	A 2, 14793 Ziesse
EcoDriving Car	Brake: extreme	2024-11-25 03:26:46	A 2, 14793 Ziesse, Brandenburg, Germany	2024-11-25 03:26:62	A 2, 14793 Ziesse
EcoDriving Car	Speeding: mid	2024-11-25 03:27:23	A 2, 14793 Ziesse, Brandenburg, Germany	2024-11-25 03:28:03	A 2, 14793 Ziesse
EcoDriving Car	Speeding: medium	2024-11-25 03:29:37	A 2, 14793 Buckow, Brandenburg, Germany	2024-11-25 03:39:53	A 2, 14793 Ziesse
EcoDriving Car	Brake: extreme	2024-11-25 04:04:31	A 2, 14797 Brandeburg an der Havel, Brandenburg, Germany	2024-11-25 04:04:39	A 2, 14796 Bissig
EcoDriving Car	Speeding: medium	2024-11-25 04:14:42	A 2, 14797 Kloster Lehrte, Brandenburg, Germany	2024-11-25 04:16:42	A 2, 14797 Kloster Lehrte, Brandenburg, Germany
EcoDriving Car	Speeding: extreme	2024-11-25 04:24:26	B 195, 66642 Drenow-Roßlau, Sachsen-Anhalt, Germany	2024-11-25 04:24:44	Drenow-Roßlau, Sachsen-Anhalt, Germany
Total					

# Inside Wialon: Toolkit for effective fleet management

**Comprehensive dashboard** centralizes all fleet data, giving a clear view of the fleet's current state. You can quickly spot inefficiencies and make timely adjustments.

**Advanced reports** on fuel use, driver performance, vehicle maintenance, and more are visualized with intuitive charts and graphs, supporting smart decisions.



# Proven efficiency across industries

Right now, **over 400,000 companies** worldwide use Wialon for their business operations to achieve their goals.



# Want to try Wialon?

Wialon is available to you through [our partner network](#), comprising 2,700+ providers of fleet digitalization services.

Backed by an expert Wialon team, our partners go beyond just providing software — they deliver **customized solutions tailored to your specific business needs**, ensuring you achieve the results you're looking for.



# Ready to digitize your fleet?

Your Wialon partner will:

- **Step 1:** Develop **a deep understanding of your business** to tailor the best solutions for your success.
- **Step 2:** Recommend and install **the right telematics hardware** to collect data and meet your fleet's specific needs.
- **Step 3:** Select **the reliable connectivity providers and data plans** for seamless data transmission.
- **Step 4:** Smoothly **integrate Wialon** with your systems and workflows to transform data into actionable business intelligence for smarter decision-making.
- **Step 5:** Provide **training** to help your team master Wialon functionalities and unlock its full potential.

And throughout the journey, your Wialon partner will be right by your side, offering continuous support to **help your business thrive**.

# Integrate Wialon into your business today

Contact **your fleet management service provider** to find out how Wialon can help optimize your fleet and transform your business.

[Explore Wialon](#)



[Facebook](#)



[YouTube](#)



[Instagram](#)



[LinkedIn](#)

