

Wialon

by Gurtam

Discover **Wialon**, the ultimate solution for fleet digitalization



Olga Zhunusova

Your guide to getting to know Wialon &
Head of the New Sales Team



Hello, this is Gurtam!

[Gurtam](#) is a software development company providing IoT solutions with a focus on fleet management.

The company is headquartered in **Vilnius, Lithuania**, and has offices in **Boston, Dubai, and Tbilisi**.



Key facts about Gurtam

21+

years of expertise
in the telematics
market

320+

talented
professionals in
the team

3

products in the
portfolio: Wialon,
flespi, and
GPS-Trace

160+

countries
where our
products are
used daily

Global presence



GURTAM OFFICES

- 1 LITHUANIA, VILNIUS (Headquarters)
- 2 GEORGIA, TBILISI
- 3 UAE, DUBAI
- 4 USA, BOSTON

MEET OUR TEAM GLOBALLY

- 5 POLAND (WARSAW, WROCLAW)
- 6 GEORGIA, BATUMI
- 7 SPAIN, BARCELONA
- 8 MEXICO (MEXICO CITY, MONTERREY)
- 9 COLOMBIA (BARRANQUILLA, MEDELLIN)
- 10 PERU, LIMA
- 11 BRAZIL (SAO PAULO, RIO DE JANEIRO, LONDRINA, MARICÁ, BELO HORIZONTE)
- 12 ARGENTINA, BUENOS AIRES
- 13 USA, DALLAS

Gurtam products



A universal platform for fleet management, suitable for all types and sizes of fleets. It is available in both cloud and server versions.

- Fleet management companies
- Telematics service providers
- Software integrators



An API-first backend platform connecting any telematics hardware to various BI and telematics systems.

- Developers
- Hardware manufacturers
- Software integrators

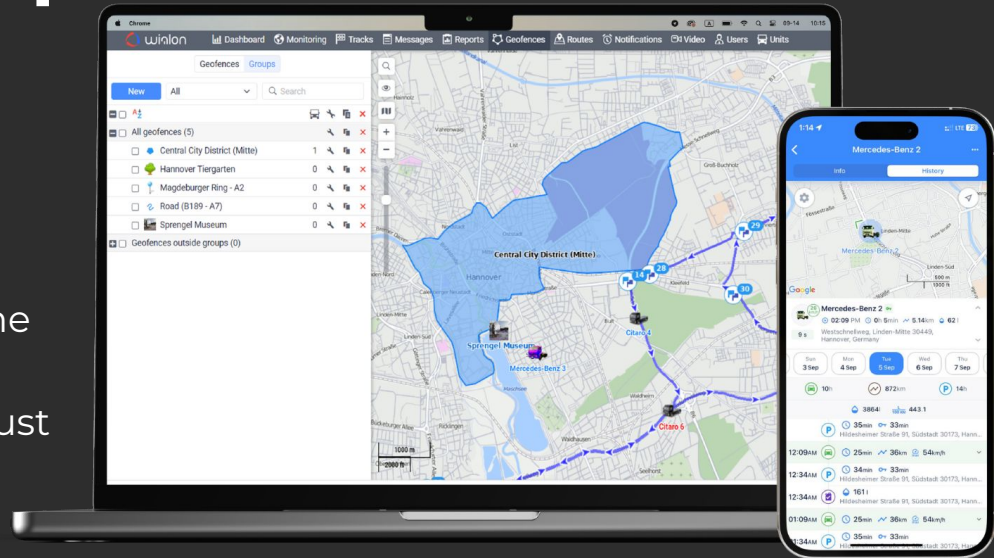


A set of easy-to-use GPS tracking applications with the possibility of free use.

- Resellers of GPS tracking services
- Small businesses
- Private users

Wialon, a flagship product of Gurtam

Wialon is a **solution for fleet digitalization**. From vehicle real-time tracking and fuel management to driver behavior monitoring and robust reporting — Wialon handles it all, keeping fleet owners' operations under control.



Key facts about Wialon

2,700+

telematics
service providers
globally are
Wialon partners

4+ million

connected
vehicles

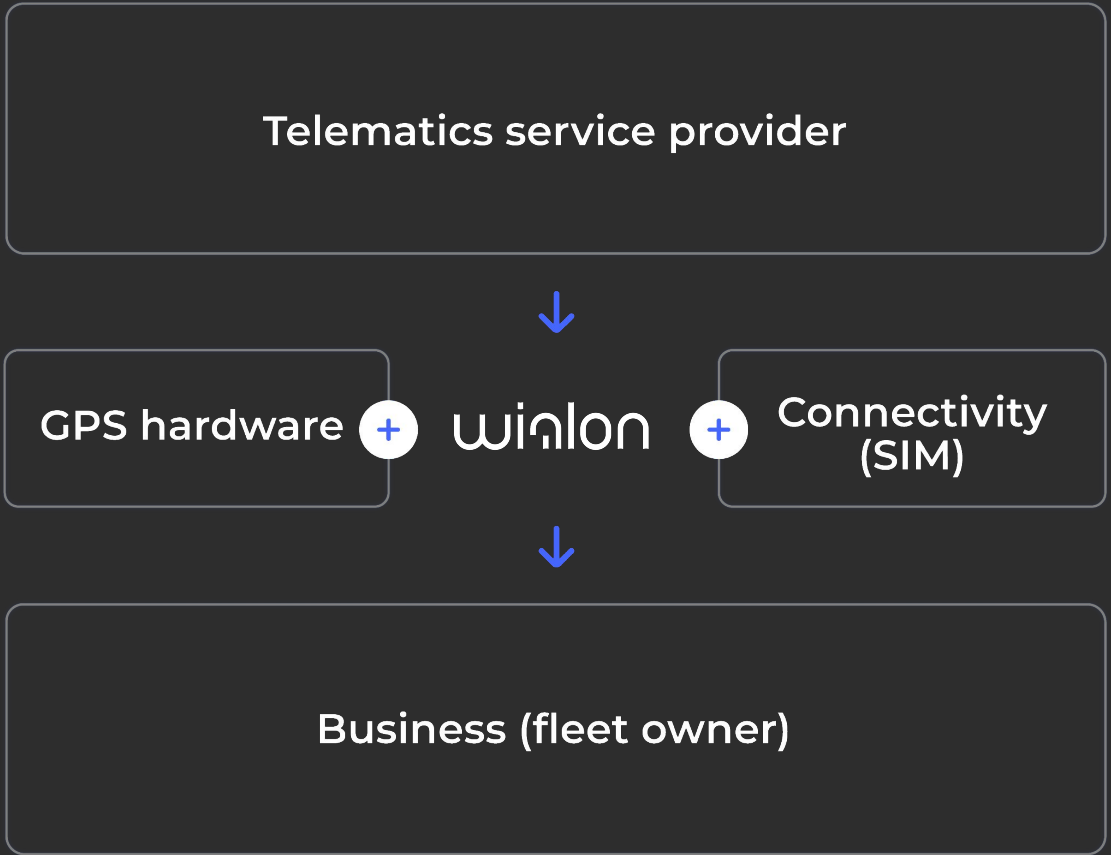
3,600+

supported device
models

99.5%

SLA-guaranteed
uptime

How a telematics solution operates



Hardware-agnostic software

Wialon was designed as a universal solution suitable for any telematics project, and therefore, it is **compatible with nearly all popular device models**.

Currently, Wialon supports **over 3,600 tracking devices**, including GPS trackers, dongles, and more from **700+ hardware manufacturers**, and these numbers are increasing constantly.

[Check your hardware compatibility](#)

If your device has not yet been integrated, please contact us to discuss the integration process and its potential terms.

Partner-centric business model

Wialon is **distributed worldwide by our partners**. We grant them autonomy and trust in how and to whom they market our product to automate and digitalize business.

Partnering with us offers the following advantages:

- **Freedom** to choose connectivity providers, hardware manufacturers, and to collaborate with other software developers to create custom solutions;
- Ability to **independently set pricing policies** for your clients;
- Support in **growing your client base** without competition from our side;
- Access to the **Wialon community**.

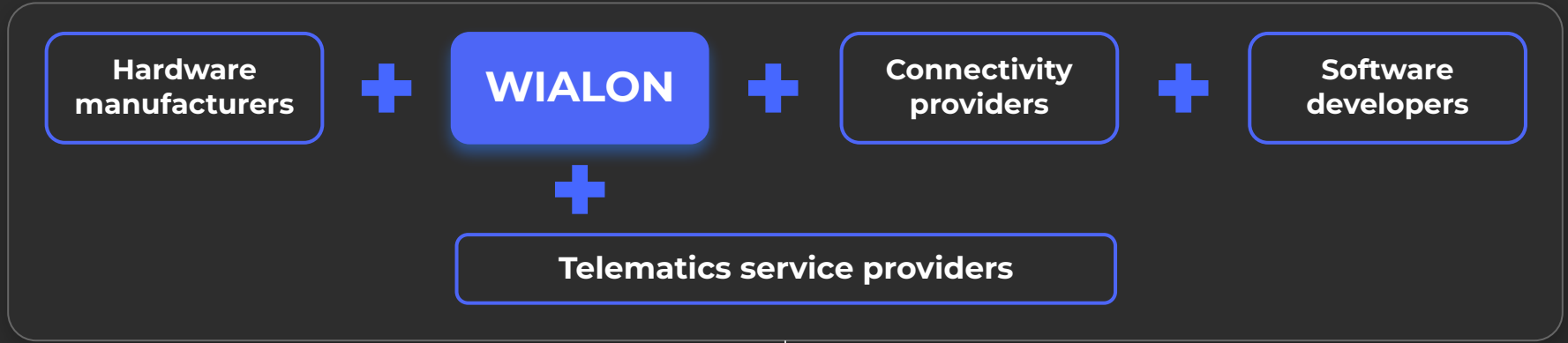
Wialon community

The [Wialon community](#) is a **global network of telematics and fleet management experts** that includes telematics service providers, hardware manufacturers, connectivity providers, and software developers.

With a strong belief in the **power of partnership**, we view each other as allies, not competitors.



Wialon community



Benefits of joining the Wialon community

- Regular **networking events** in Lithuania, Mexico, Brazil, the UAE, and other countries to enhance global connections and find new collaborations;
- Access to exclusive professional **chats** and **forums** for gaining industry insights;
- **Joint participation** in exhibitions and conferences to increase brand visibility;
- Extra opportunities and **exclusive community events** designed to foster informal connections and spark creativity.



Wialon partner map

The [Wialon partner map](#) on [wialon.com](#) serves as an open platform listing Wialon partners.

Fleet owners use this tool to find service providers in their area, and submit requests for collaboration.

This functionality guarantees a **consistent flow of inquiries**.



Quick start and rapid integration

Starting with a new software provider can be challenging, so we've made the **process of getting to know our product and services as comfortable and smooth as possible.**

Here's what you can expect in your first months as our partner:

- Regular **onboarding calls** with your dedicated Partner Success Manager;
- A series of **onboarding emails** that equip you with essential knowledge and tools for a successful start with Wialon;
- **Trainings** on the platform functionality.

Further assistance

After your 6-month onboarding period, we continue support your journey with Wialon by providing:

- **Three dedicated managers:** *Partner Success Manager, Project Implementation Manager, and Technical Growth Manager* to assist with operational questions, consult on projects, and help your business grow;
- **Multilingual technical support** (English, Spanish, French, Portuguese, and Russian), with **24/7 support available in English** to address any urgent issues;
- Access to ready-to-go **marketing materials**.
- **Wialon certification tests** for your employees.

Scope of application

Wialon **fits all kinds of projects**, from basic fleet management to complex logistics tasks. Our partners regularly show how flexible Wialon is by entering new business niches and effectively solving their clients' unique problems.



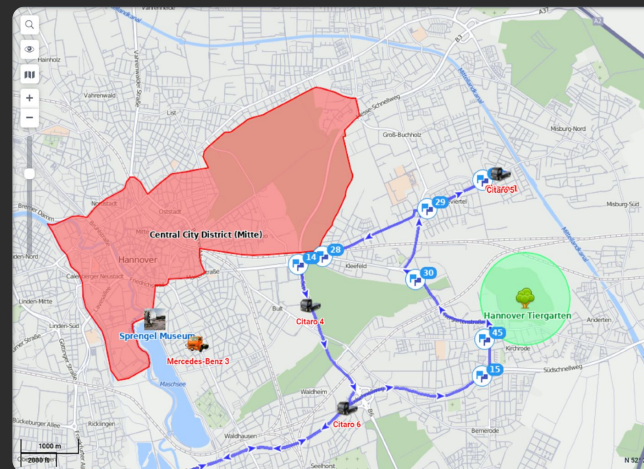
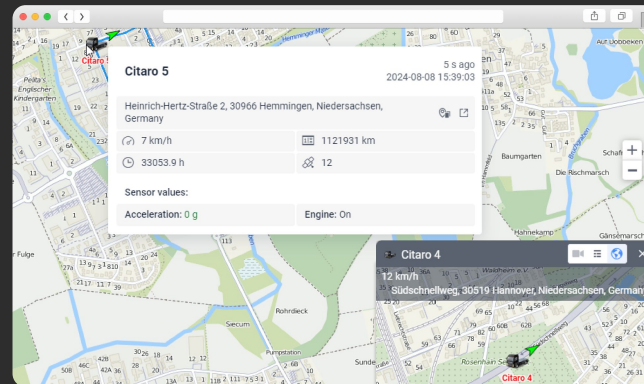
How Wialon transforms fleet operations

Wialon provide fleet owners with real-time updates, ensuring the **safety and security** of vehicles, drivers, and cargo.

Online tracking allows fleet managers to know where their vehicles are, helping to control late or early arrivals and detect any deviations from planned routes.

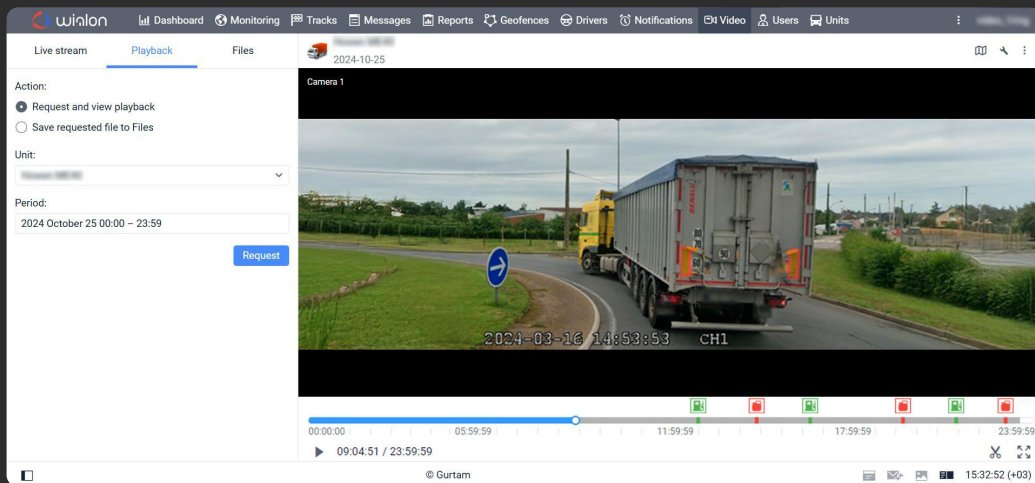
Geofencing shows users if vehicles enter or exit specific areas. This feature helps prevent unauthorized access, ensure compliance, and promote safe driving.

Notifications and alerts keep fleet managers informed about critical incidents such as speeding, sudden stops, and alarm activation, helping them respond quickly and prevent costly incidents.



How Wialon transforms fleet operations

With **video telematics**, fleet owners can watch live streams or recorded videos, ensuring unbiased incident analysis, improving road safety, and simplifying insurance claims.

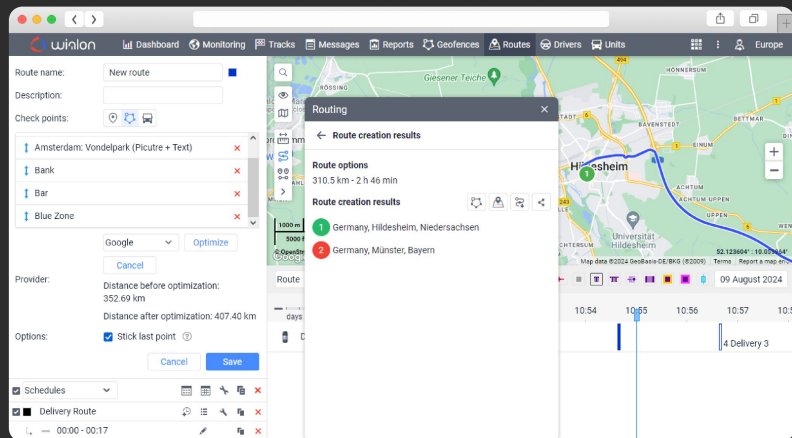
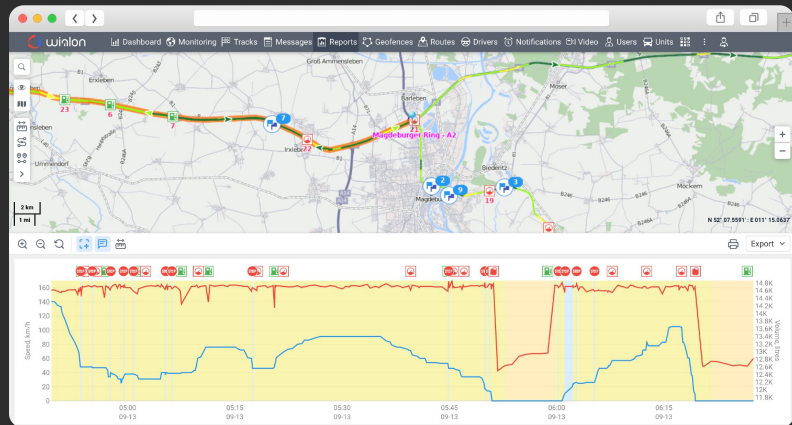


How Wialon transforms fleet operations

Every fleet owner aims to **reduce operating costs**. With Wialon, this can be achieved through these key features:

Fuel management reduces costs by tracking fuel usage, preventing fuel theft, and identifying inefficient driving habits.

Route optimization utilizes algorithms to find the most efficient routes, thereby reducing travel time and fuel consumption.

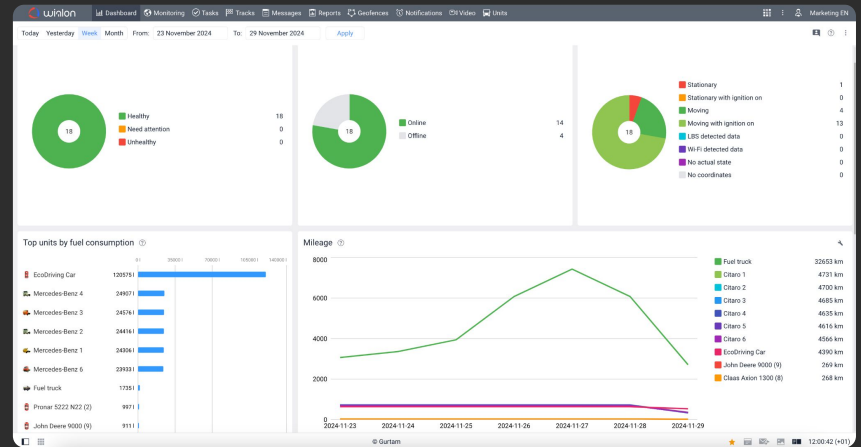


How Wialon transforms fleet operations

To **delve deeper** into all the processes within the fleet and **make data-driven decisions**, Wialon provides these tools:

Comprehensive dashboard centralizes all fleet data, giving a clear view of its current state. Users can quickly spot inefficiencies and make timely adjustments.

Advanced reports on fuel use, driver performance, vehicle maintenance, and more are visualized with intuitive charts and graphs, supporting smart decisions.



The screenshot shows a detailed report table with the following columns: Beginning, End, Duration, Total time, Off-time, and Location. The report covers items from 1 to 50 of 230.

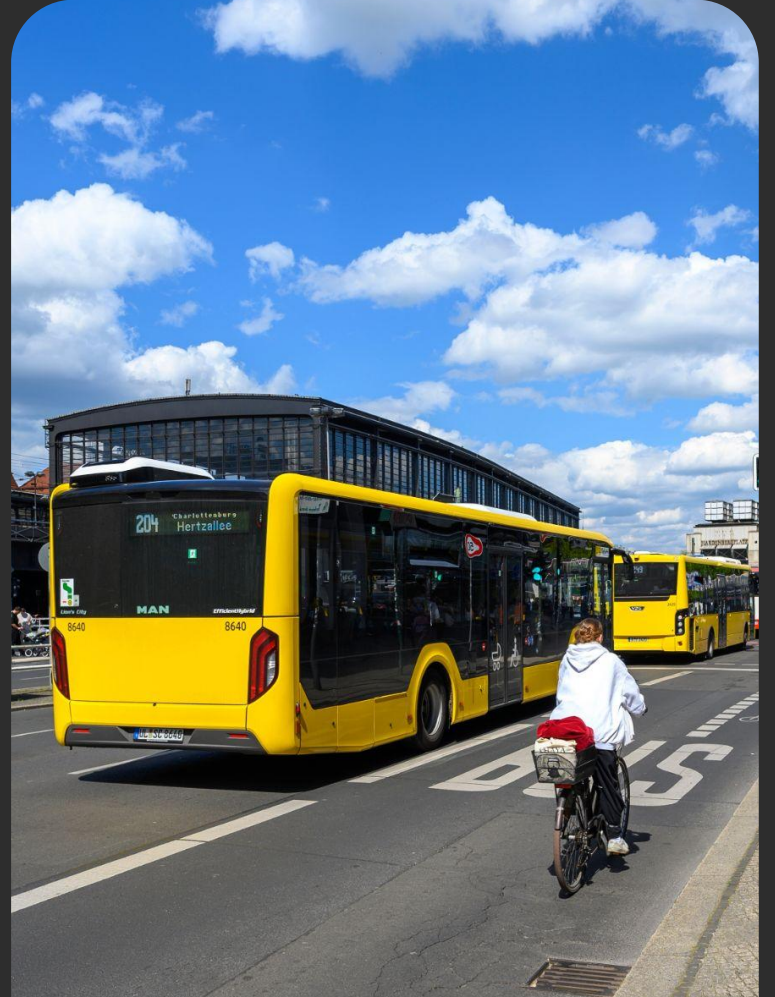
Beginning	End	Duration	Total time	Off-time	Location
2023-08-31 03:37:15	2023-08-31 03:56:26	0:19:11	0:19:11	0:00:03	E30, Ziesar 14793, Potsdam-Mittelmark, Germany
2023-08-31 05:51:11	2023-08-31 05:59:48	0:08:37	0:08:37	1:54:45	Jenchowter Straße 24, Herrenkrug 39114, Magdeburg, Germany
2023-08-31 06:19:27	2023-08-31 06:57:30	0:38:03	0:38:03	0:19:39	Raststätte Börde-Nord 2, Hohe Börde 39343, Börde, Germany
2023-08-31 06:04:53	2023-08-31 09:20:17	1:15:24	1:15:24	1:07:23	Tiergartenstraße 117, Kirchrode 30559, Hannover, Germany
2023-08-31 09:46:32	2023-08-31 10:00:10	0:13:38	0:13:38	0:26:15	Expo-Allee, Mittelfeld 30521, Hannover, Germany
2023-08-31 10:18:33	2023-08-31 10:41:14	0:22:41	0:22:41	0:18:23	Hans-Böckler-Allee 35, Bult 30173, Hannover, Germany
2023-08-31 10:45:14	2023-08-31 10:53:36	0:08:22	0:08:22	0:04:00	Marienstraße 11, Mitte 30171, Hannover, Germany
2023-08-31 11:07:37	2023-08-31 11:31:35	0:23:58	0:23:58	0:14:01	Tiergartenstraße 117, Kirchrode 30559, Hannover, Germany
2023-08-31 11:45:42	2023-08-31 12:23:49	0:38:07	0:38:07	0:14:07	Expo-Allee, Mittelfeld 30521, Hannover, Germany
2023-08-31 12:35:05	2023-08-31 13:09:46	0:34:41	0:34:41	0:11:16	Tiergartenstraße 117, Kirchrode 30559, Hannover, Germany
2023-08-31 13:24:34	2023-08-31 13:43:58	0:19:24	0:19:24	0:14:48	Kronsbergstraße, Laatzen 30880, Hannover, Germany
2023-08-31 14:03:57	2023-08-31 14:32:47	0:28:50	0:28:50	0:19:59	Tiergartenstraße 117, Kirchrode 30559, Hannover, Germany
2023-08-31 14:36:52	2023-08-31 15:14:41	0:37:48	0:37:48	0:27:48	Lehmer Straße 55, Amdenken 30559, Hannover, Germany
2023-08-31 15:18:49	2023-08-31 15:43:49	0:25:00	0:25:00	0:04:08	Tiergartenstraße 117, Kirchrode 30559, Hannover, Germany
2023-08-31 16:04:36	2023-08-31 16:18:12	0:13:36	0:13:36	0:20:47	Kronsbergstraße 33, Laatzen 30880, Hannover, Germany
2023-08-31 18:22:03	2023-08-31 18:28:10	0:06:07	0:06:07	0:20:51	Tiergartenstraße 117, Kirchrode 30559, Hannover, Germany
2023-08-31 18:40:36	2023-09-01 02:01:39	7:21:03	7:21:03	0:12:29	Tiergartenstraße 1138, Kirchrode 30559, Hannover, Germany
2023-09-01 03:37:15	2023-09-01 03:56:26	0:19:11	0:19:11	1:35:36	E30, Ziesar 14793, Potsdam-Mittelmark, Germany
2023-09-01 05:51:12	2023-09-01 05:59:48	0:08:36	0:08:36	1:54:46	Jenchowter Straße 24, Herrenkrug 39114, Magdeburg, Germany
2023-09-01 06:19:27	2023-09-01 06:57:30	0:38:03	0:38:03	0:19:39	Raststätte Börde-Nord 2, Hohe Börde 39343, Börde, Germany
2023-09-01 06:04:53	2023-09-01 09:20:18	1:15:25	1:15:25	1:07:23	Tiergartenstraße 117, Kirchrode 30559, Hannover, Germany

More solutions by Wialon

Fleet maintenance management. Digitize fleet maintenance with features for handling planning, controlling maintenance activities, and tracking all expenditures.

Public transportation management. Offer stop creation, route optimization, vehicle distribution, schedule management, and real-time route performance monitoring.

Delivery fleet management. Streamline delivery processes, offer route planning, and adapt delivery to your client's business needs.



More solutions by Wialon

Driver behavior monitoring. Provide businesses with tools for driver performance assessment based on penalty points for violations.

Vehicle leasing solution. Let companies effortlessly track and locate leased fleets or remotely switch off financed cars for quick recovery.

Smart farming. Optimize agro-industry operations with seamless control over field works.

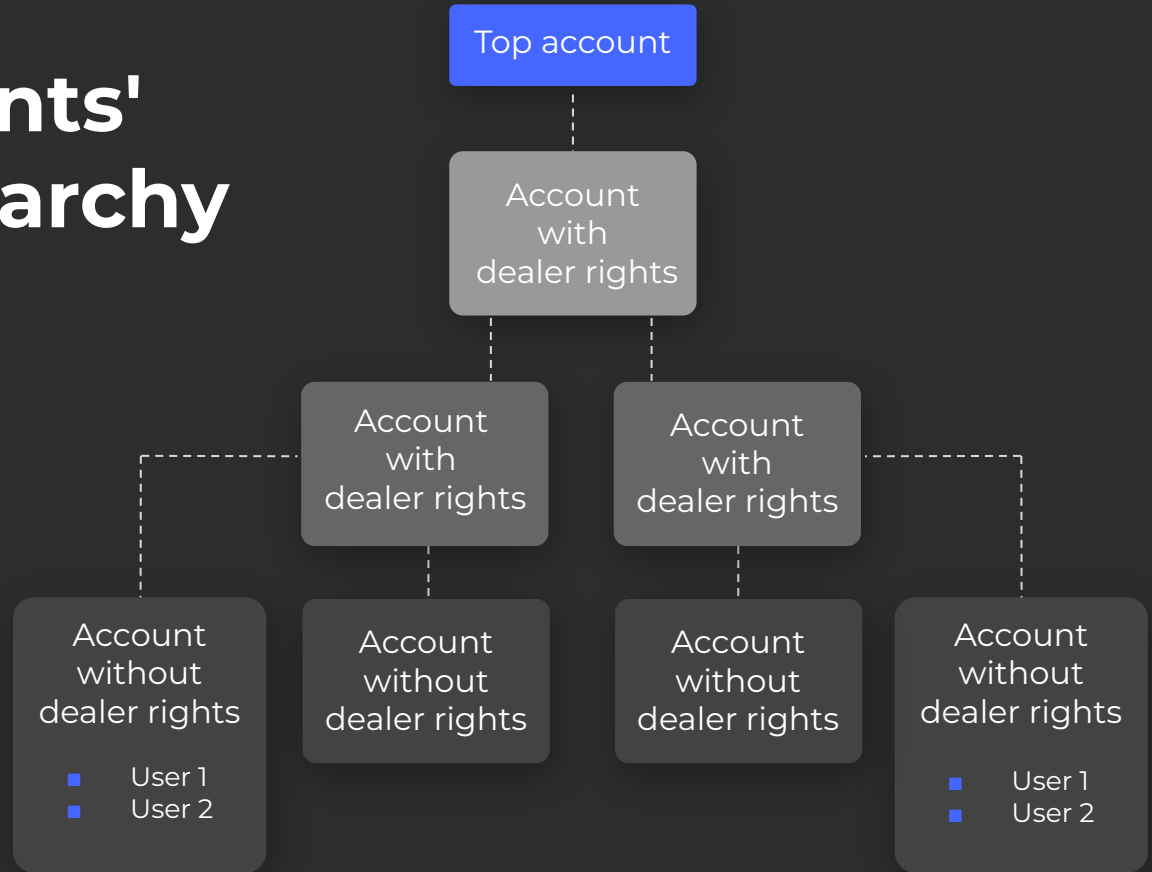
Field employee tracking. Take control of field employees, remotely assign tasks, and oversee their execution.



Efficient clients' account hierarchy

With Wialon, it's easy to create a separate account for each client, navigate between them, and customize billing plans.

To organize a convenient [account hierarchy](#) and configure all your accounts, you'll have access to CMS Manager, Wialon's dedicated management system.



Integrations & customization

With the **SDK and open API**, you can build customized solutions and seamlessly integrate them with other client's systems, such as ERP, BI, accounting, etc.

The **marketplace** of third-party integrations offers a wide range of ready-made solutions suitable for various business needs and scenarios.

The screenshot displays the Wialon Marketplace interface. At the top, there is a navigation bar with the Wialon logo, a search bar, and a language selector (EN). Below the navigation bar, there are several dropdown menus for categories: Wialon ecosystem, Solutions, Hardware, Support, Resources, Community, Contacts, and Personal account. A 'GET STARTED' button is located on the right side of the navigation bar.

The main content area features a 'Marketplace' section with a heading and a sub-heading: 'We gathered the Wialon-based apps and integrations created by the experienced members of the Wialon community in the Marketplace. With these solutions, you can automate processes, cut costs, and get the best out of received data. Single platform – endless possibilities.' Below this text are two buttons: 'VIEW CATALOG' and 'POPULAR CATEGORIES'.

Below the marketplace section, there is a section titled 'All apps 85'. It includes a search bar labeled 'Search apps'. To the right of the search bar, there are filter options: 'Filters (0)' with a 'RESET' button, and two toggle switches for 'Free' and 'Recommended'. Below the search bar, there are three app cards:

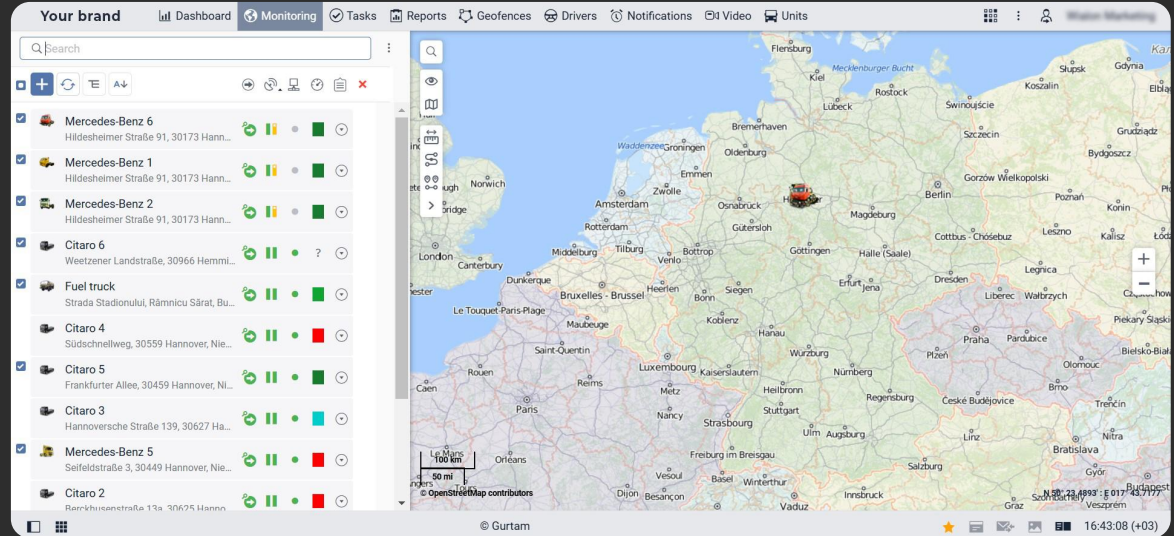
- Hecterra** (Wialon): Control crops rotation and field works with Hecterra.
- Fleetrun** (Wialon): The web application to plan, control, and record expenditures for maintenance.
- NimBus** (Wialon): NimBus is designed to control fixed routes vehicles.

At the bottom right, there is a 'Categories' section with a list of checkboxes for filtering: All, Integrations, GPS fleet tracking, Reporting system, Fuel control, Transport logistics, Construction asset tracking, Security, and Agriculture GPS tracking.

White-label option

Customize the Wialon interface to present it under **your own brand**.

With this option you can modify elements such as the login page logo and background, color scheme, fonts, links, reports, and more to show your brand identity.



Want to try Wialon?

If you want to test Wialon to see if it's what you're looking for, we will provide you with a **free 30-day trial**.

Not sure if Wialon can help with your specific project? We'd love to give you a **demo** covering the functionalities you're interested in.

Just send an email to sales@wialon.com specifying your needs.



Want to become a Wialon partner?

We would be delighted to start our collaboration! Simply write us at sales@wialon.com, and let's our partnership begin.

As a Wialon partner, you will receive high-quality technical and business support right from the start. And, of course, you will also become a part of our vibrant Wialon community.



wialon

by Gurtam



Facebook



Instagram



YouTube



LinkedIn

sales@wialon.com

wialon.com

